

■ 氏名  
 ■ I D  
 ■ 年齢 才 性別 MALE  
 ■ 身長 161cm 体重 37 Kg  
 ■ B P 148/75mmHg  
 ■ H R 9bpm  
 % of TARGET HR (200)

■ MENU NAME TONEYAMA 01  
 ■ PROTOCOL TONEYAMA  
 ■ STOP STAGE  
 ■ WARM UP SPEED 1km/h  
 ■ AFTER EXER SPEED OFF  
 ■ ST MEASUREMENT POINT 40ms  
 ■ ST SLOPE INTERVAL 80ms

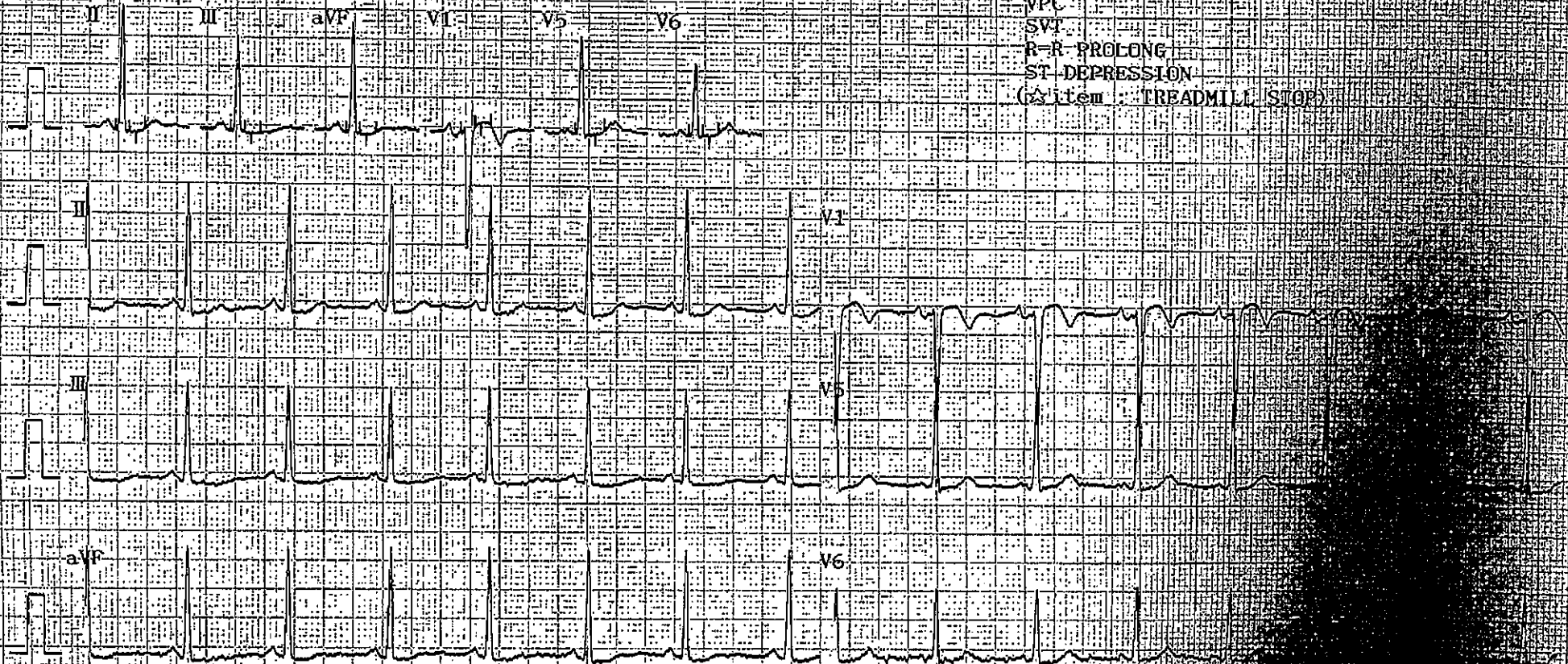
■ HOSPITAL TONEYAMA  
 ■ DOCTOR  
 ■ COMMENT 21%

■ ST MEASUREMENT

	II	III	aVF	V1	V5	V6	(mm=0.1mV)
LEVEL	-0.3	-0.3	-0.4	-1.6	+0.1	-0.2	mm
SLOPE	+7	+0	+3	+0	+10	+1	mm/s
INDEX	+0.3	+0.3	+0.1	+1.6	+1.1	+0.1	μVs
INTEG	-3.2	-3.4	-3.4	+3.4	-0.2	-0.1	μVs
R AMP	+2.1	+1.6	+1.8	+0.1	+1.6	+1.2	mV

■ WARNING MESSAGE

- TARGET HEART RATE
- HEART RATE DECREASE
- MULTIFORM VPC
- FREQUENT VPC
- VPC-COUPLET
- BIGEMINY
- VPC >= 6beats/min
- VPC
- SVT
- R-R PROLONG
- ST DEPRESSION
- (System TREADMILL STOP)



■ HR : 87bpm 43% of TARGET HR (200)  
 ■ BP : 139/ 81mmHg ■ DP : 12093

■ ST MEASUREMENT

	I	II	III	aVR	aVL	aVF	V1	V2	V3	V4	V5	V6	(mm=0.1mV)
LEVEL	-0.2	-0.9	-0.6	+0.6	+0.2	-0.7	+1.8	+1.7	+1.0	-0.4	-0.5	-0.5	mm
SLOPE	+5	+6	+1	-5	+1	+3	-1	+18	+26	+12	+6	+6	mm/s
INDEX	+0.2	-0.3	-0.5	+0.1	+0.3	-0.4	+1.7	+3.5	+3.6	+0.8	+0.1	+0.1	mm/s
INTEG	-1.8	-7.4	-5.4	+4.9	+1.9	-6.0	+15.5	+11.5	+8.6	-2.9	-3.6	-3.8	μVs
R-AMPL	+0.4	+2.2	+1.8	+0.0	+0.0	+2.0	+0.1	+1.8	+3.2	+2.9	+1.8	+1.3	mV

